

Portimão Arena

Population Support and Concentration Zone (ZCAP)
within the scope of the Significant Rural Monchique Fire
5th - 9th of August 2018

Institutions involved:

- Municipality of Portimão
- Algarve Region Tourism Entity
- Algarve University Hospital
- Adventist Development and Resources Agency
- Caritas
- Child Reeducation and Support Cooperative of Portimão
- Childcare Institutions of Portimão
- Humanitarian Association of Volunteer Firefighters
- Municipal Social Emergency Network
- Municipal Water and Waste Company
- Parish Councils of Alvor, Mexilhoeira Grande and Portimão
- Portimão Tourism Association
- Red Cross
- Regional Health Administration
- Santa Casa da Misericórdia de Portimão
- Social Security
- Volunteers

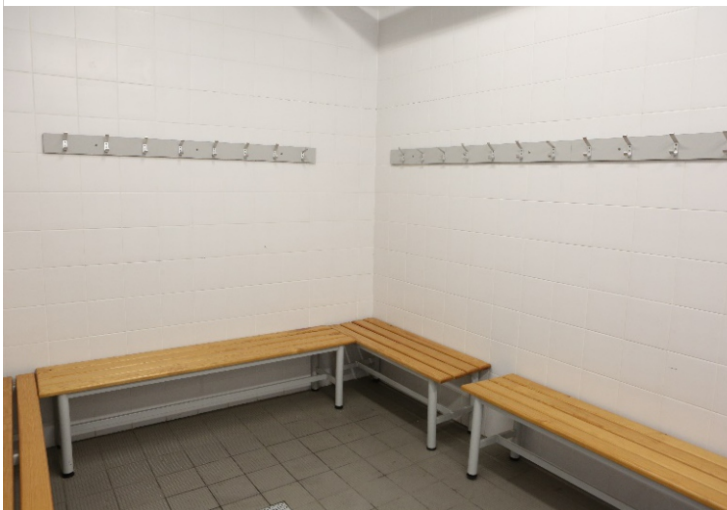
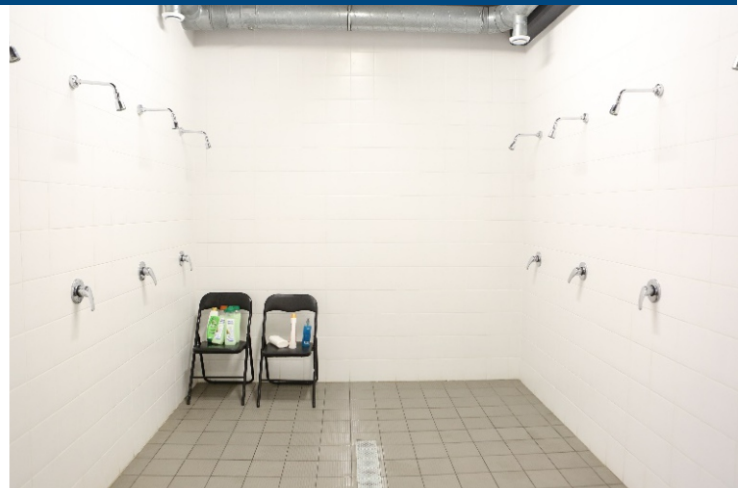
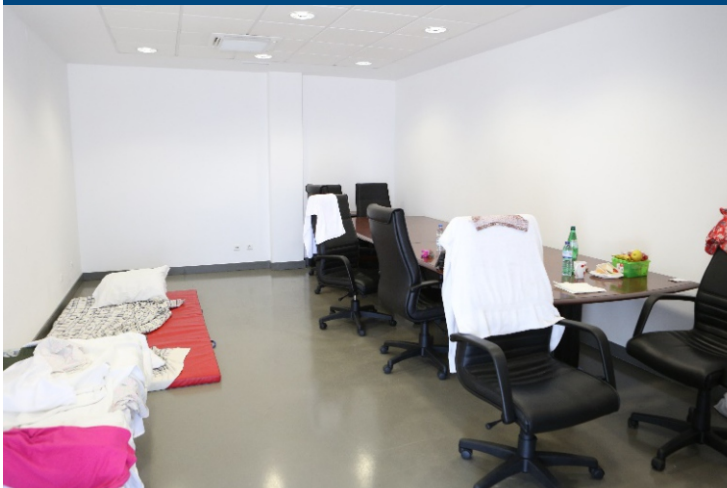


Food & Beverage 24h/24h
845 meals to 246 sheltered people
Permanent food service





**Capacity to accommodate 400 people
Total of 411 overnight accommodations**





Special conditions and activities for children





**Guaranteed lodging conditions with dignity
and special areas for families with pets
Permanent assistance 24h with health support**





Clothing and Hygiene products ensured for everyone





Permanent Medical and Social support





Social network and volunteers responded excellently



The surplus goods were donated to associations and institutions of social solidarity in the municipality of Portimão.



Dia 09-08-2018
 Até às 5h30
 - André Gomes / portavozes
 - Ana Mendes
 - Sílvia Barbalho
 - Patrícia Coutinho
 Das 5h30 às 9h
 - Jurdos (Museu)
 - Vêta (Museu)
 - Paula David
 - Paulo Duarte
 - Lúcia (Lúcia)
 Das 9h às 15h30
 - Vânia David
 - Vanda
 - Edite
 - Miguel
 - Dora Gomes (Dora)
 Das 15h30 às 21h30
 - Aleto
 - Sérgio Pinto
 - Teresa Correia
 - Xana
 - João (voluntário) (Rui)
 23h30 → 7h00
 Dina L.
 Ana Mendes
 + voluntários

70 volunteers among community members, municipal employees, associations and private companies of the municipality and of the neighboring municipalities.